

# GIMA

Geographical Information Management and Applications

## NEWSLETTER NOVEMBER 2009

### -INTRODUCTION-

The academic year has started. Slowly, but steady, everybody is working on the appropriate modules, internships and/or theses, and as the days are becoming shorter, winter is coming to Europe. Even though this might sound quite depressing: cheer up, now it's the time to take some serious action! This namely marks the end of the first semester, and the beginning of the second semester, so just hold on, work hard as usual and you'll be fine... In the meanwhile, the staff is trying to get ready for what's coming up.

### -GRADUATED-

The GIMA staff congratulates Karolina Orlinska, Tom van der Putte and Ivo Visser on defending their theses successfully, last September in Enschede. On December 4<sup>th</sup>, they'll receive their diploma at the Academiegebouw in Utrecht, together with Ebrahim Hemmatniya and Olaniyi Odunuga.

### -(RE)REGISTRATION PROCEDURE FOR STUDENTS-

We are happy to see that all students are doing well. As with each year, a lot of troubles arise in September/October with the (re)registration procedure. Although it might be a little early to discuss this, we would like you to pay attention for the re-registration, to prevent a lot of stress and *hassle* for all involved parties. The following information might be unnecessary for some students, and the scheme is also to be found on our website <http://www.msc-gima.nl>.

As the central administration is in Utrecht, you are required to re-register each year. These application forms will usually come half June as hard copy at your given address in the Osiris System. Are you suspecting you haven't received anything, urgently contact the Students Service Desk, or the Studiepunt. After returning the application forms, you will receive your students card late August, as a confirmation you are fully enrolled. No students card received? Once again, contact the students service desk! Remember: if you decide to take a break for a year, you'll have to notify us you are halting your

programme. Also, the next year you have request yourself the re-registration forms at the students service desk.

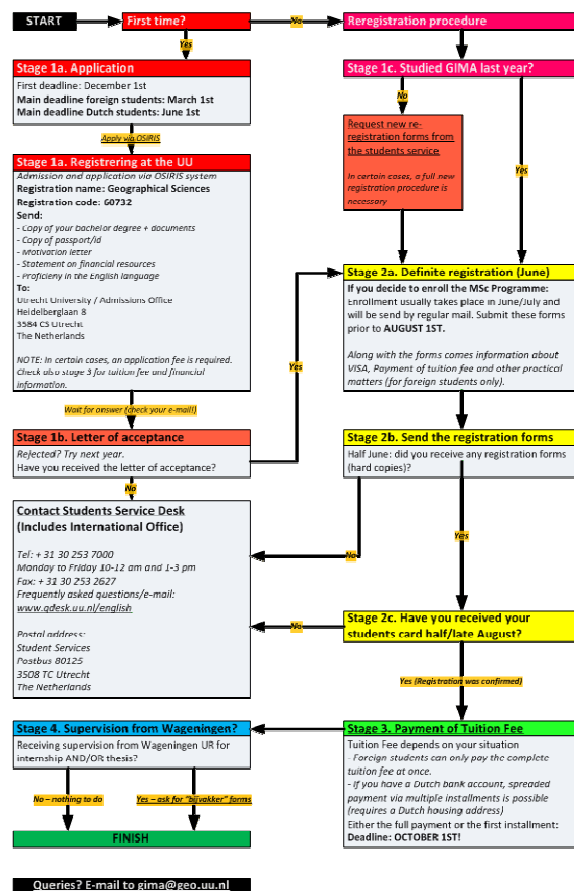
Next, and probably one of the major difficulties to tackle for especially foreign students, is the payment of the tuition fee. Whether you pay the full tuition fee in once, or whether you make use of the spread payment option (Dutch Bank Account holders only!): the first instalment is extremely important. If you don't pay, you lose all of your rights of being a student, plus you might come in serious trouble. This payment has to arrive before October 1<sup>st</sup>. Since this year, the Utrecht University usually sends a reminder via e-mail, so don't forget to check your Solismail, too!

Even though you know you might be only studying three months (for your thesis, for instance), you still need to pay the tuition fee. A restitution can always be claimed as soon as you completed.

Finally, if you are receiving supervision from the Wageningen University for your internship and/or thesis, you need to fill in the so-called "Bijvakker" Forms. These can be requested via the secretary ([gima@geo.uu.nl](mailto:gima@geo.uu.nl) or [justin.stook@wur.nl](mailto:justin.stook@wur.nl)).

### -CONTACT DAYS IN UTRECHT-

Although this has been communicated earlier to all of the students via Blackboard, the contact days are starting upcoming **Monday November 30<sup>th</sup>** with the closure of Module 1 and the start of Module 2. **The full schedule can be found under GIMA General Information.** Everybody (Students of Module 1, 2, 4 and 5, as well as the staff members) should have received the letter on November 20<sup>th</sup>, although individual communication has been going on for quite a while, too.



Check this full scheme at <http://www.msc-gima.nl>, under Application/(Re)registration procedure

*Schedule for contact days of Utrecht:*

<b>11/30 (Mon)</b>	09:30 - 10:30	UNNIK 517	<b>1</b>
	11:00 - 12:30		
	13:30 - 14:30		
	14:30 - 15:30		
	16:00 - 17:00		
<b>12/01 (Tue)</b>	10:00 - 12:00	UNNIK 101 (Exam)	<b>1</b>
	13:00 - 14:00	RUPPERT 103	<b>1</b>
	14:00 - 15:00	RUPPERT 103	<b>7</b>
	15:00 - 16:00	RUPPERT 103	<b>7</b>
<b>12/02 (Wed)</b>	09:00 - 09:45	UNNIK 218	<b>2</b>
	09:45 - 11:15		
	11:30 - 12:30		
	13:30 - 17:00	UNNIK 422	
<b>12/03 (Thu)</b>	09:00 - 10:45	UBU Library 6.18	<b>2</b>
	11:00 - 12:30		
	13:00 - 17:00	UBU Library/Jaarbeurs	
<b>12/04 (Fri)</b>	09:00 - 10:45	RUPPERT 123	<b>2</b>
	11:00 - 12:15		
	13:30 - 16:15	TNO-NITG	
<b>12/07 (Mon)</b>	09:00 - 12:00	Langeveld E009 (Exam)	<b>4</b>
	13:00 - 17:00	Langeveld E036	<b>4</b>
<b>12/08 (Tue)</b>	09:00 - 12:00	Langeveld E009	<b>4</b>
	13:00 - 15:00	Langeveld E036	
	15:00 - 17:00		
<b>12/09 (Wed)</b>	09:30 - 10:00	UNNIK 218	<b>5</b>
	10:00 - 12:30		
	13:30 - 17:00		
<b>12/10 (Thu)</b>	09:00 - 12:30	UNNIK 103/104	<b>5</b>
	13:30 - 17:00	UNNIK 214	
<b>12/11 (Fri)</b>	09:00 - 12:30	UNNIK 101	<b>5</b>
	13:30 - 17:00	RUPPERT 127	

*Full schedule available on Blackboard under GIMA General Information. Directions have been included in the letter.*

*And the separate schedule for GIMA Board members and the students who will present their mid-terms, as well as the alumni:*

<b>12/04 (Fri)</b>	11:00 - 13:00	Aula Academie	<b>GIMA Board meeting</b>
	13:00 - 15:30		<b>Mid-terms</b>
	15:30 - 17:00		<b>Graduation ceremony</b>

We hope that everybody have found a suitable place to stay in Utrecht, as unfortunately Utrecht University does not have a hotel for students as ITC has, so students are supposed to arrange a place to stay for themselves.

In previous years some students found places to stay via CouchSurfing (staying at other peoples homes). For those of you who will be in Utrecht for the next contact period I have listed some places you can stay for reasonable prices:

B&B Utrecht City Center: <http://www.hostelutrecht.nl/>

Strowis hostel: <http://www.strowis.nl/>

See also:

Hostel Bookers: <http://www.hostelbookers.com/>

Hostel World: <http://www.hostelworld.com/>

Booking.com: <http://www.booking.com/>

I hope it helps you to find a place to stay!

#### **-GEO INFO EXCHANGE CONFERENCE-**

December 2<sup>nd</sup> and 3<sup>rd</sup> there is the GIN (also know as Geo Info Xchange) Conference is Utrecht in the Jaarbeurs. You can freely enter the conference, as long as you register via [www.ginconference.nl](http://www.ginconference.nl). Students for module 2 will visit the conference as a group on December 3<sup>rd</sup>.

#### **-ENROLLMENT MODULE 5-**

Will you be a student for module 5? If so, have you already **enrolled** yourself via Blackboard? This has been communicated since the beginning of October already. Participants for module 2 do not need to enrol via Blackboard.

#### **-GIMA DRINK UTRECHT-**

As usual, there will be a GIMA drink in Utrecht. Everybody is invited to come! The date is **December 11<sup>th</sup> at 19:30** in **Florin, Utrecht**, like all previous times. For directions, please surf to <http://www.florinutrecht.nl>. **Please check BB so now and then if there will be any changes to the time and date** (since we are waiting for confirmation).

#### **-VI MATRIX SUBSCRIPTION-**

For the newer students among us: I have received 10 (out of 19) confirmed addresses. You'll receive your first issue of VI Matrix in January 2010.